

The Future of Testing Railway Interlockings Has Arrived



**InterTest[®] Automated
Interlocking Test System**

UTE **THE
INNOVATORS
IN RAILWAY
SYSTEM TESTING**

The Revolutionary InterTest® Auto



The InterTest® Automated Interlocking Test System represents a revolutionary advancement in interlocking test capabilities. In addition to providing for fully automated tests for all types of railway interlockings, InterTest® makes testing more accurate, thorough, consistent, reliable and cost-efficient.

InterTest® incorporates unique tools to create a detailed model of interlockings and their associated wayside signal locations. It then automatically generates test scripts and completely automates the performance of both in-service and FRA-mandated two-year interlocking tests, including the capability to conduct two-year tests remotely.

Specialized Hardware Componentry and Powerful Software Capabilities

InterTest® includes a combination of permanently installed and portable hardware componentry. UTE's proprietary Control Point Interfaces (CPIs) and CPI routers are installed at all signal control locations throughout the interlocking test limits to provide the foundation of the system. VHF radio modems, client computers and a host computer then are added to the system configuration, as needed, depending on the size and style of the interlocking and the type of testing to be conducted.

InterTest® is powered by two distinct software programs:

DrawLayout – A CAD program used for model entry and test-sheet generation, DrawLayout creates a graphic of an interlocking's track and signal system layout, including all track sections, power switches, signals, hand-throw switches, electric locks, derails and diamond crossings. It then defines all possible routes through the interlocking and generates test sheets for the routes selected for testing.

RunLayout – The test engine that runs the interlocking tests, RunLayout provides network communications, reads the database created by DrawLayout, executes test scripts, compiles and stores data on the status of all objects in the interlocking and produces a comprehensive test report. RunLayout also provides the ability to manually control the interlocking from its interface screen, which can be viewed and operated remotely via any common Web browser.

A Unique Approach to Interlocking Tests

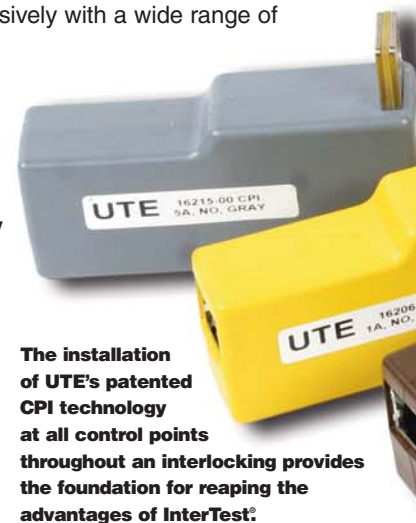
InterTest® can be used to test any type of interlocking – from the oldest relay-based systems to the newest microprocessor-based systems. InterTest® does not evaluate, analyze or diagnose the vital logic of an interlocking, and it doesn't dictate how to test interlockings; it simply automates a user's existing test procedures and recreates them in a computerized test template.

InterTest® is designed to create a detailed computerized model of the track and signal system layout for any specific interlocking. It then automatically manipulates the interlocking into the desired state and measures the status of every object in the interlocking test limits – including all signals, track circuits, switches and non-vital indications – throughout every step of the test.

Delivering a Broad Spectrum of Valuable Benefits

With its unique capabilities, InterTest® meets user needs comprehensively with a wide range of unprecedented benefits, including:

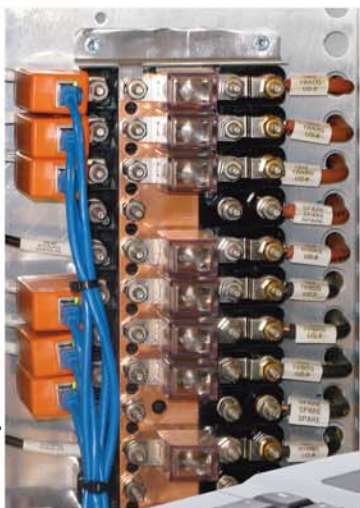
- **System-Wide Standardization of Testing Interlockings and Wayside Signals**
- **Automatic Generation of Test Scripts**
- **Automated Testing for Improved Accuracy and Efficiency**
- **More Consistent and Thorough Testing**
- **More Precise and Reliable Test Results**
- **Improved Safety**
- **Enhanced Test Productivity and Cost-Efficiency**
- **Reduced Capital and Operating Expenses**
- **Remote Testing Capability for Two-Year Tests**



The installation of UTE's patented CPI technology at all control points throughout an interlocking provides the foundation for reaping the advantages of InterTest®.

Automated Interlocking Test System

InterTest® can be used on any type of interlocking – from the oldest relay-based systems to the newest microprocessor-based systems.



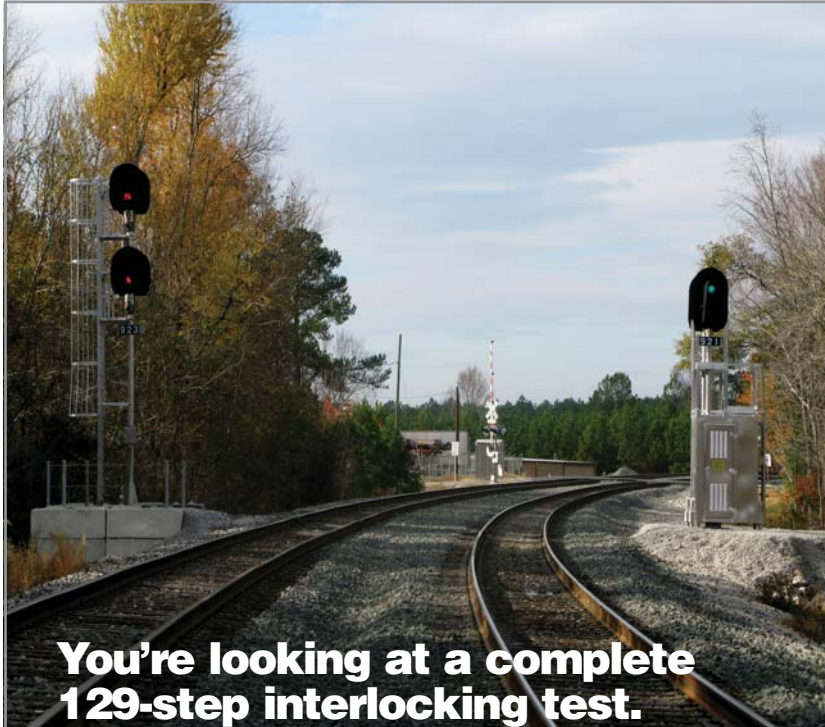
InterTest® measures the status of every object in the interlocking test limits, every step of every test.



Leading the Way With New Railway Test System Technologies

Ultra-Tech Enterprises, Inc. is a specialized engineering, manufacturing and service company that provides on-board and portable test systems for railroads, transit authorities, railcar builders and signal system suppliers. As the innovators in railway system testing, UTE continually leads the industry with the development of new technologies to advance the capabilities and efficiency of specialized railway test systems.

In addition to developing automated systems for testing relays, interlockings and cab signal equipment, UTE also offers custom design and manufacturing services for specialized test and training equipment for railway and related applications.



**You're looking at a complete
129-step interlocking test.**

In progress.

Introducing the new InterTest® Automated Interlocking Test System

The future of testing railway interlockings has arrived – and it's a beautiful sight to behold. With Ultra-Tech Enterprises' new InterTest® Automated Interlocking Test System, a more accurate, thorough, consistent and cost-effective way to test interlockings is here.

InterTest® incorporates special tools to create a detailed model of interlockings and their associated wayside signal locations. It then automatically generates test scripts and completely automates the performance of both in-service and two-year interlocking tests – measuring the state of every object in the interlocking test limits, every step of the way.

Exclusively Represented by
TPSC
Transportation Products
Sales Company

636/532-1144
www.tpscraill.com

To learn more about how easy it is to put the power of InterTest® to work for your benefit, please contact us today.

UTE
THE INNOVATORS
IN RAILWAY SYSTEM TESTING
800/293-2001 www.ute-inc.com

**To learn more
about how easy
it is to put the
power of InterTest®
to work for your
benefit, please
call UTE at
800/293-2001
or contact our
exclusive
representatives,
Transportation
Products Sales
Company, at
635/532-1144.**

InterTest® is a registered trademark of Ultra-Tech Enterprises, Inc.

UTE THE INNOVATORS
IN RAILWAY
SYSTEM TESTING

Ultra-Tech Enterprises, Inc.
4701 Taylor Road, Punta Gorda, FL 33950
800/293-2001
www.ute-inc.com