

# FLEXIBLE CURRENT PROBE (Railroad Insulated Joint Tester)



UTE P/N 16837-02

**F**or Railroad application, this Flexible Current Probe can be used for the measurement of Insulated Joint resistance. The flexible sensor permits measurements on conductors where standard clamp on probes cannot be used. The mV output is proportional to the current measured for direct readings on DMMs, loggers, oscilloscopes and power or harmonic meters. The length of the flexible sensor is 36". Other lengths are available upon request.

**Test The  
Ultra-Tech Way...**

## Model 16837

### STANDARD FEATURES:

- Accuracy 1% of Reading
- TRMS measurements when connected to a TRMS instrument
- No core saturation or damage if overloaded
- Overrange LED for measurement circuitry
- Waterproof sensor
- 9V battery, provides typical 150 hr continuous operation
- Very high frequency response
- Low phase shift for power measurements
- Excellent linearity
- Lightweight

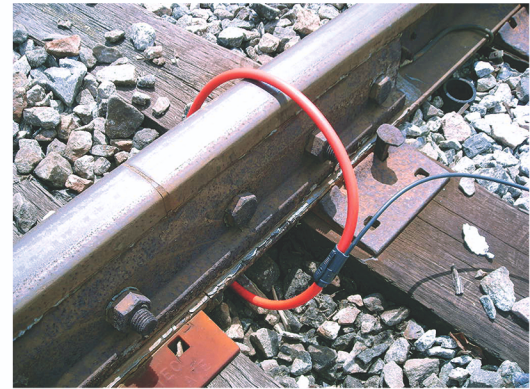


# Flexible Current Probe (Railroad Insulated Joint Tester) Model 16837

## SPECIFICATIONS

ELECTRICAL	
Current Range	100/1000A
Measurement Range	5 to 1000A
Output Signal(s)	10mV/A 1mV/A
Crest Factor (mid-range)	9.0
Phase Shift @ 50/60Hz	0.7°
Residual Noise	200mA

COMMON	
Accuracy	1% of Reading
Frequency Range	10 to 20,000Hz
Working Voltage	EN 61010, 1000V Cat.III
Safety Standards	EN 61010, CE Mark and UL listed (E143005)
Operating Temperature and %RH	14° to 131°F (-10° to 55°C) (sensor to 90°C), 10 to 90% RH (@50°C)
Minimum Bend Radius	0.75" (19mm)
Water and Dustproofing	Sensor IP45, Module IP40
Battery and Battery Life	9V Alkaline, approx. 150 hours of continuous use
Good Battery Indication	Green LED
Electronic Overload Indication	Red LED
Output	3/4 spaced banana plugs, optional banana plug to BNC adaptor available, 6.5 ft (2m) lead from sensor to module



**Ultra-Tech Enterprises, Inc.** is a specialized engineering, manufacturing and service company that provides on-board and portable testing equipment for public and private railways, transit operating authorities and railcar builders.

As the innovators of testing equipment, we are continually creating answers for individual railroads and transit authorities. We assess each problem, design a custom solution and then share innovative technology to benefit the entire industry.



Ultra-Tech Enterprises, Inc. • 4701 Taylor Road • Punta Gorda, FL 33950-4720  
(800) 293-2001 • FAX: 941-575-2020 • [www.ute-inc.com](http://www.ute-inc.com)